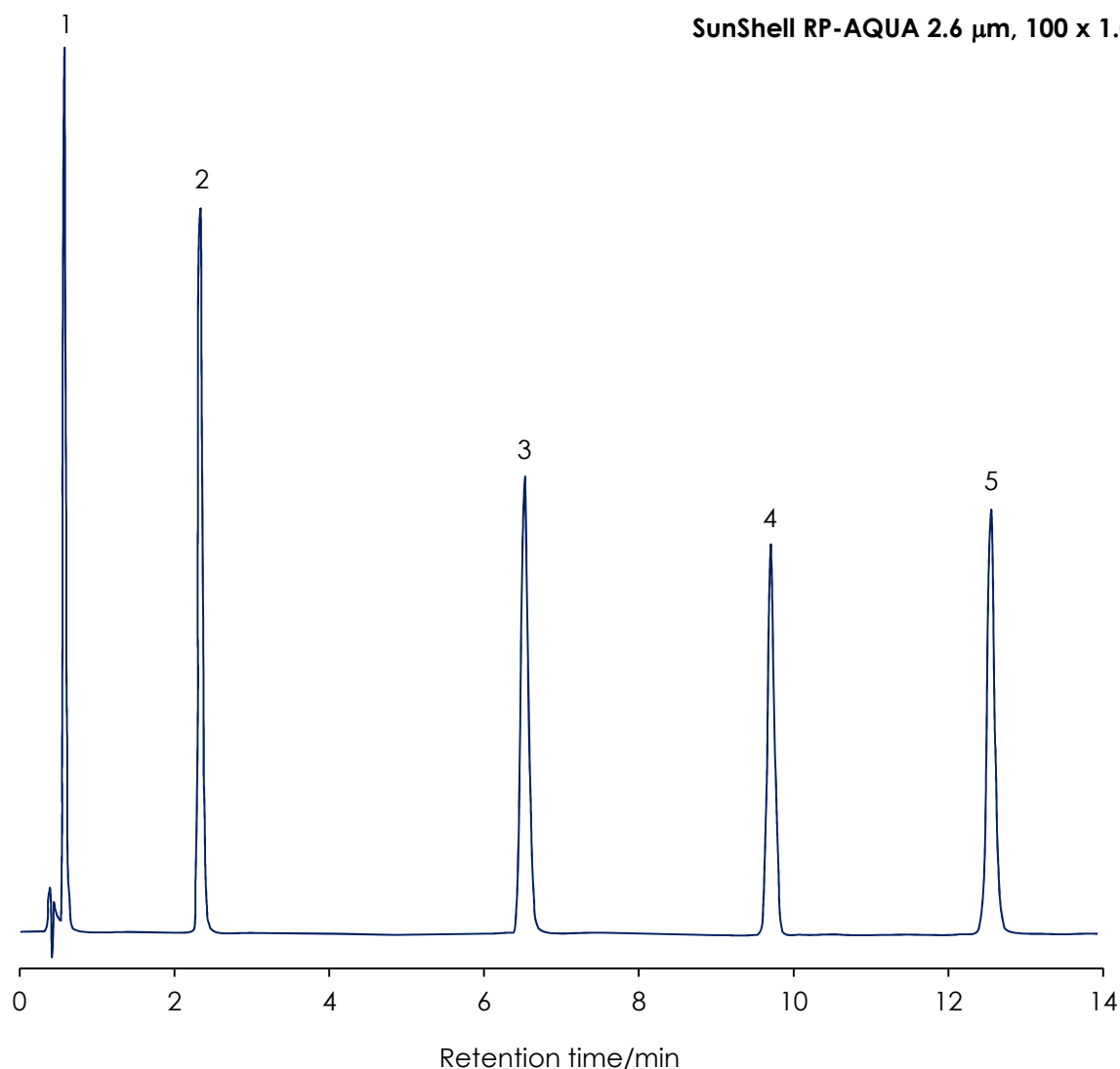


1.0 mm i.d. カラムによる標準ペプチドの分離

Standard peptides using 1.0 mm i.d. column



Column: SunShell RP-AQUA, 2.6 μ m 100 x 1.0 mm

Mobile phase: A) 0.1 % trifluoroacetic acid (TFA) in water

B) 0.08 % trifluoroacetic acid (TFA) in acetonitrile

%B 10% to 30% in 25 min

Flow rate: 0.15 mL / min

Temperature: 60 °C

Detection: UV@214 nm

Sample: 1 = Gly-Tyr, 2 = Val-Tyr-Val, 3 = Met enkephalin, 4 = Leu enkephalin, 5 = Angiotensin II
(HPLC peptide standard mixture by Sigma-Aldrich)