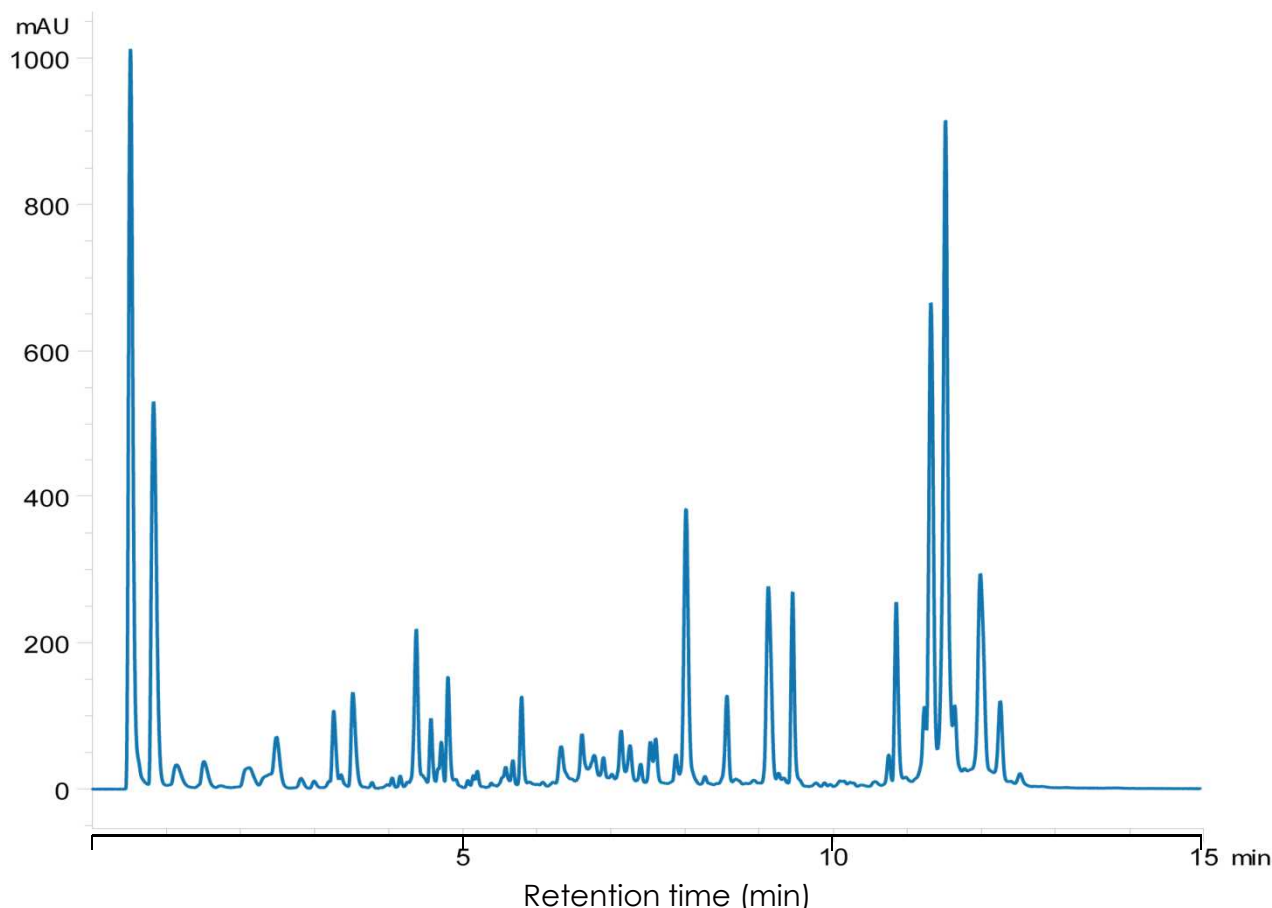


## アルファカゼイン消化物の分離

SunShell C18-16 2.6  $\mu\text{m}$ , 100 x 2.1 mm i.d.

### Alpha Casein Digest using SunShell C18-16



Column: SunShell C18-16, 2.6  $\mu\text{m}$  (16 nm) 100 x 2.1 mm,

Mobile phase: A) 0.1% TFA in water

B) 0.1% TFA in acetonitrile

Gradient program:

Time(min)	0	10	14
%B	10	36.4	36.4

Flow rate: 0.50 mL/min ,

Temperature: 40 °C

Detection: UV@214 nm,

Injection volume: 10  $\mu\text{L}$ ,

Sample:

1. Alpha Casein Digest