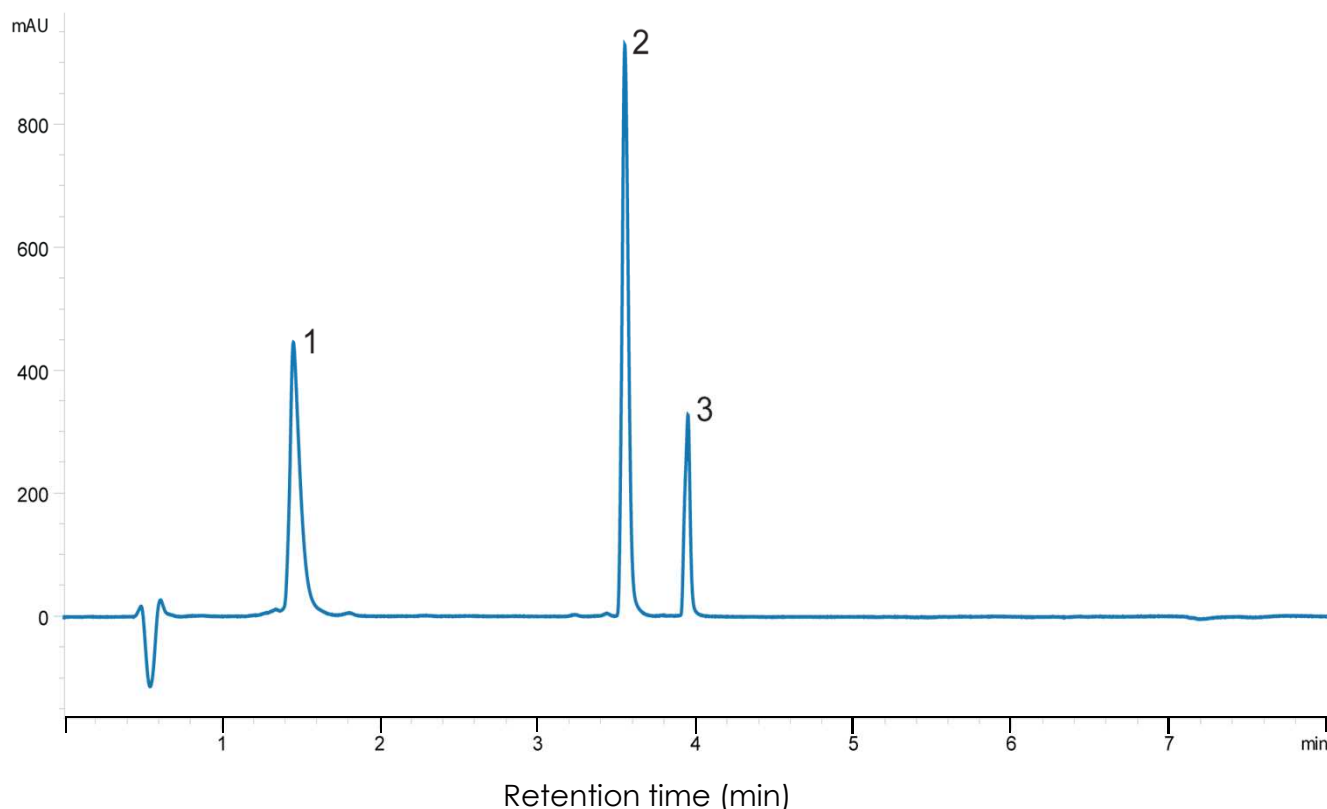


ペプチドの分離(2)

SunShell C18-16 2.6 μm , 100 x 2.1 mm i.d.

Peptide Mix using SunShell C18-16



Column: SunShell C18-16, 2.6 μm (16 nm) 100 x 2.1 mm,

Mobile phase: A) 0.1% TFA in water

B) 0.1% TFA in acetonitrile

Gradient program:

Time(min)	0	1	6
%B	20	20	95

Flow rate: 0.50 mL/min ,

Temperature: 40 °C

Detection: UV@214 nm,

Injection volume: 10 μL ,

Concentration: 0.10 $\mu\text{g}/\mu\text{L}$ each protein,

Sample:

1. Angiotensin I

2. Somatostatin

3. Glu-1-fibrinopeptide