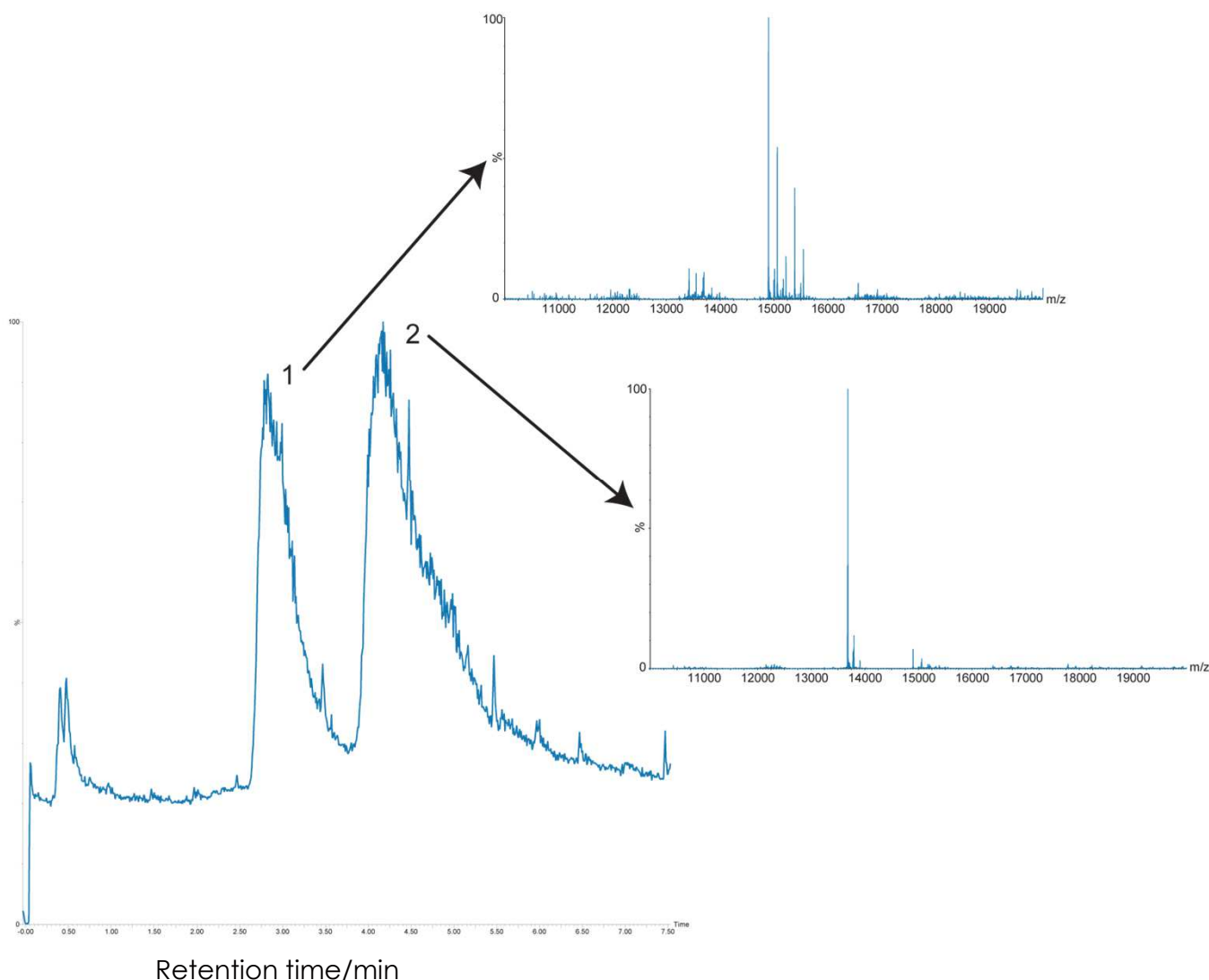


## リボヌクレアーゼA/Bの分離(3)

SunShell C8-30 2.6  $\mu\text{m}$ , 100 x 2.1 mm i.d.

## Ribonuclease A/B Mix using SunShell C8-30



Column: SunShell C8-30 2.6  $\mu\text{m}$  (30 nm), 100 x 2.1 mm

Mobile phase: A) 0.1% Formic acid in water

B) 0.1% Formic acid in acetonitrile

Gradient program: 

Time(min)	0	10	
Isocratic separation	%B	17.5	17.5

Flow rate: 0.50 mL/min

Temperature: 60 °C

Detection: MS, Waters SYNAPT G2-S

Injection volume: 10  $\mu\text{L}$

Concentration: 0.01  $\mu\text{g}/\mu\text{L}$  each protein

Sample:

1. Lipase Impurity

2. Lipase