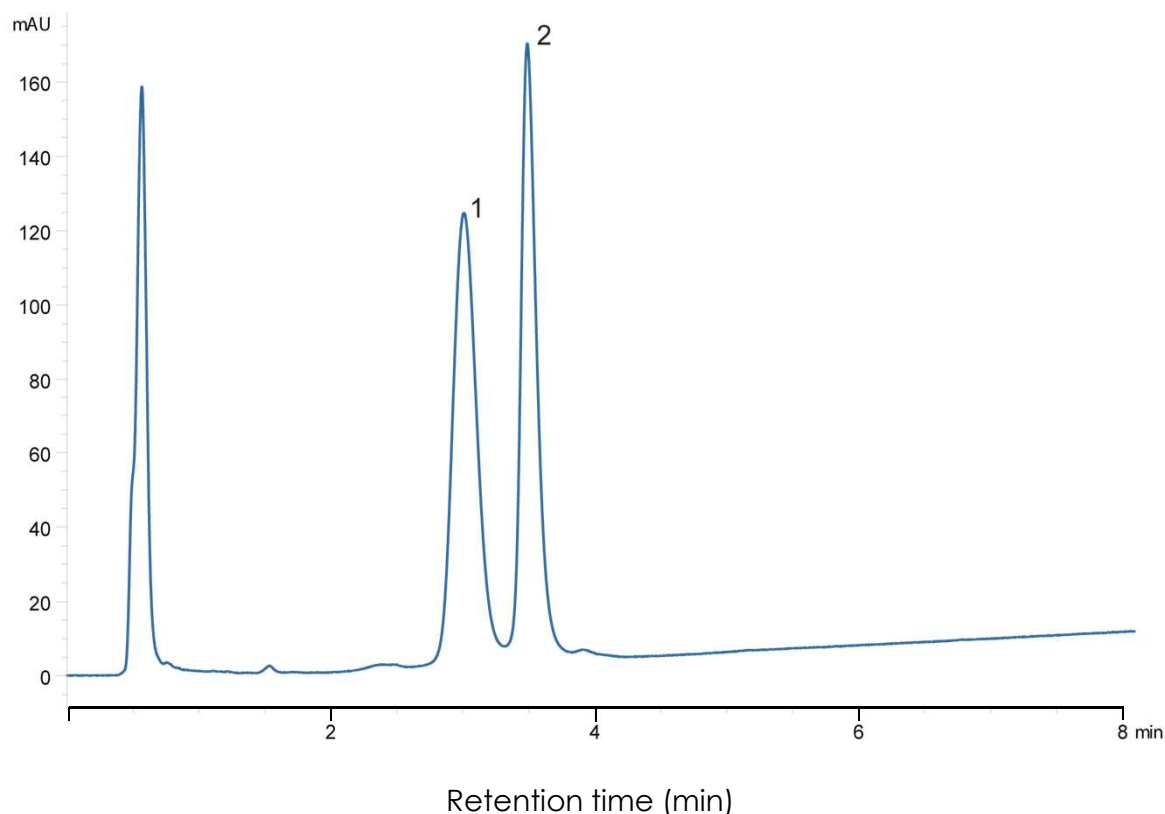


リボヌクレアーゼA/Bの分離(1)

SunShell C18-16 2.6 μm , 100 x 2.1 mm i.d.

Ribonuclease A/B Mix using SunShell C18-16



Column: SunShell C18-16, 2.6 μm (16 nm) 100 x 2.1 mm,

Mobile phase: A) 0.1% TFA in water

B) 0.1% TFA in acetonitrile

Gradient program:

Time(min)	0	7
%B	25	35

Flow rate: 0.50 mL/min ,

Temperature: 40 °C

Detection: UV@214 nm,

Injection volume: 10 μL ,

Concentration: 0.01 $\mu\text{g}/\mu\text{L}$ each protein,

Sample:

1. Ribonuclease B

2. Ribonuclease A