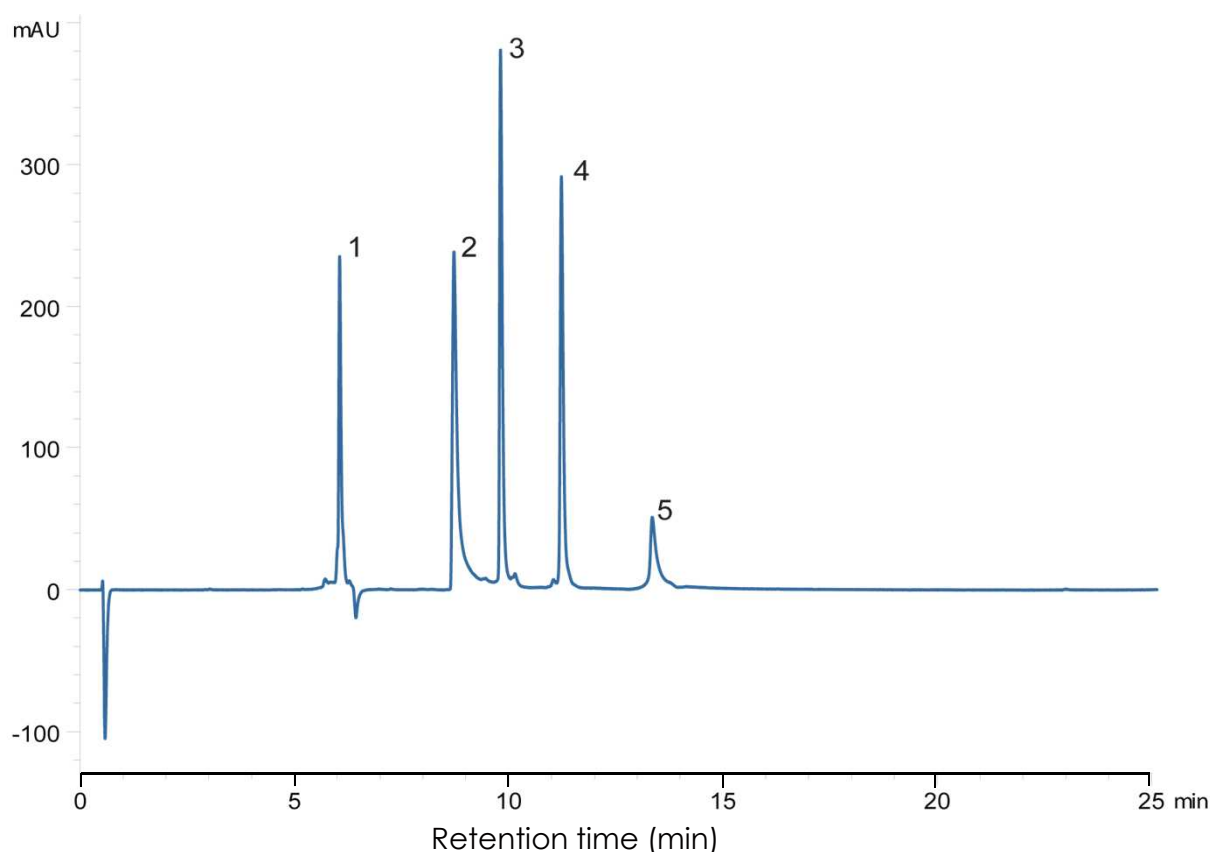


タンパク質の分離(4)

SunShell C4-30 2.6 μm , 100 x 2.1 mm i.d.

Protein Mix using SunShell C4-30



Column: SunShell C4-30, 2.6 μm (30 nm) 100 x 2.1 mm,

Mobile phase: A) 0.1% TFA in water

B) 0.1% TFA in acetonitrile

Gradient program:

| Time(min) | 0 | 20 |
|-----------|----|------|
| %B | 22 | 70.5 |

Flow rate: 0.50 mL/min ,

Temperature: 40 °C

Detection: UV@214 nm,

Injection volume: 10 μL ,

Concentration: 0.01 $\mu\text{g}/\mu\text{L}$ each protein,

Sample:

1. Cytochrome C
2. Bovine Serum Albumin
3. Myoglobin
4. Carbonic Anhydrase
5. Phosphorylase B