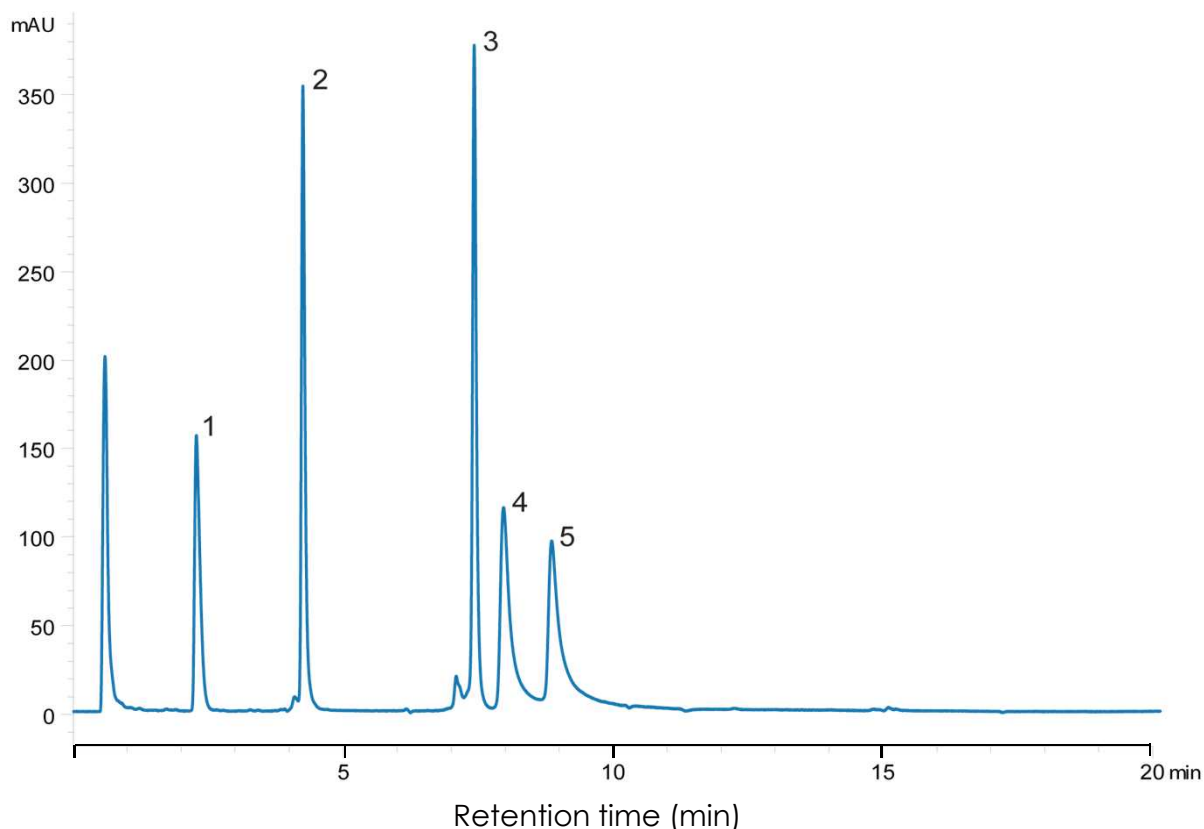


タンパク質の分離(2)

SunShell C4-30 2.6 μm , 100 x 2.1 mm i.d.

Protein Mix using SunShell C4-30



Column: SunShell C4-30, 2.6 μm (30 nm) 100 x 2.1 mm,

Mobile phase: A) 0.1% TFA in water

B) 0.1% TFA in acetonitrile

Gradient program:	Time(min)	0	20
	%B	22	70.5

Flow rate: 0.50 mL/min ,

Temperature: 40 °C

Detection: UV@214 nm,

Injection volume: 10 μL ,

Concentration: 0.01 $\mu\text{g}/\mu\text{L}$ each protein,

Sample:

1. Angiotensin I

2. Ribonuclease A

3. Lysozyme

4. Transferrin

5. Bovine Serum Albumin