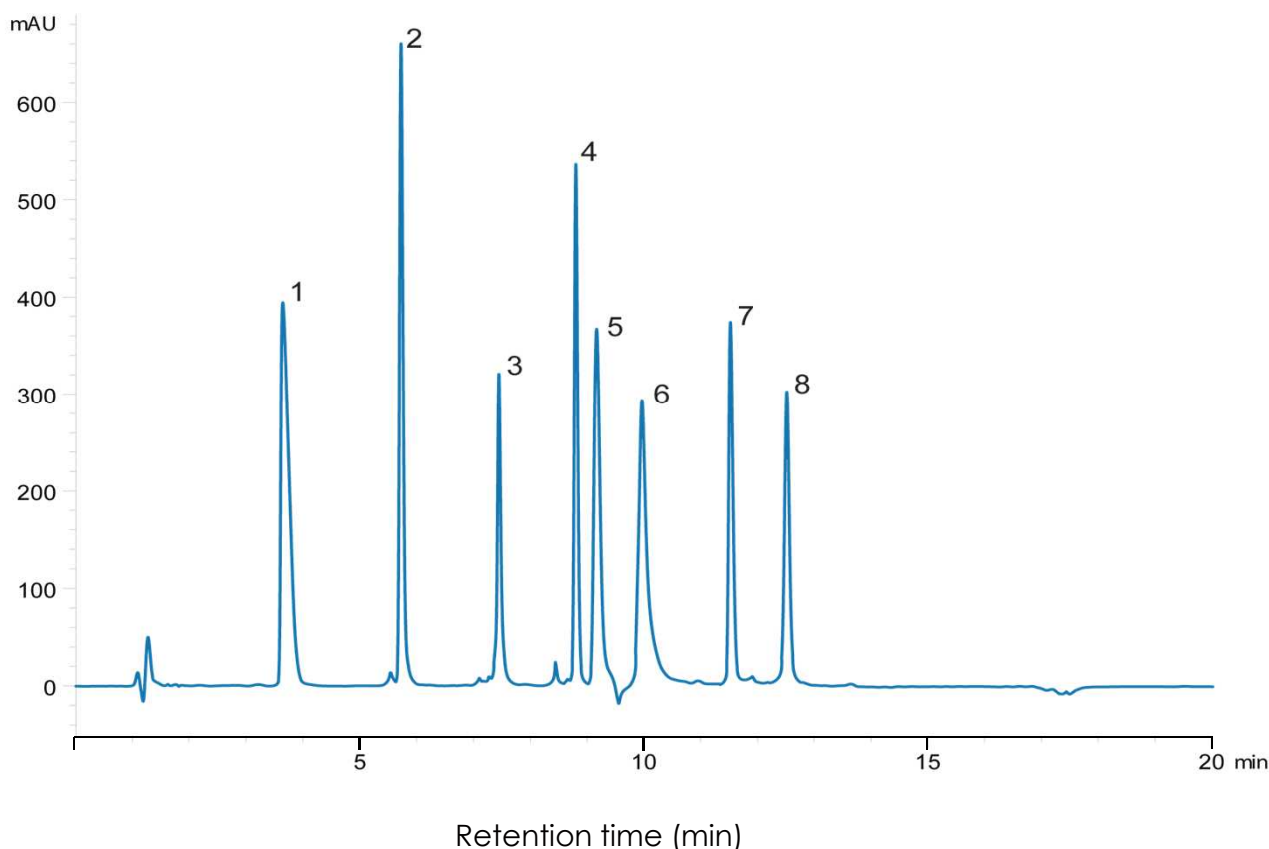


タンパク質の分離(1)

SunShell C8-30 2.6 μ m, 150 x 2.1 mm i.d.

Protein Mix using SunShell C8-30



Column: SunShell C8-30, 2.6 μ m (30 nm) 150 x 2.1 mm,

Mobile phase: A) 0.1% TFA in water

B) 0.1% TFA in acetonitrile

Gradient program:	Time(min)	0	20
	%B	22	70.5

Flow rate: 0.35 mL/min ,

Temperature: 40 °C

Detection: UV@214 nm,

Injection volume: 10 μ L,

Concentration: 0.01 μ g/ μ L each protein,

Sample:

1. Angiotensin I
2. Ribonuclease A
3. Cytochrome C
4. Lysozyme
5. Transferrin
6. Bovine Serum Albumin
7. Myoglobin
8. Carbonic Anhydrase