



BIOTECH AB

WWW.BIOTECH-SWEDEN.COM

Application Data

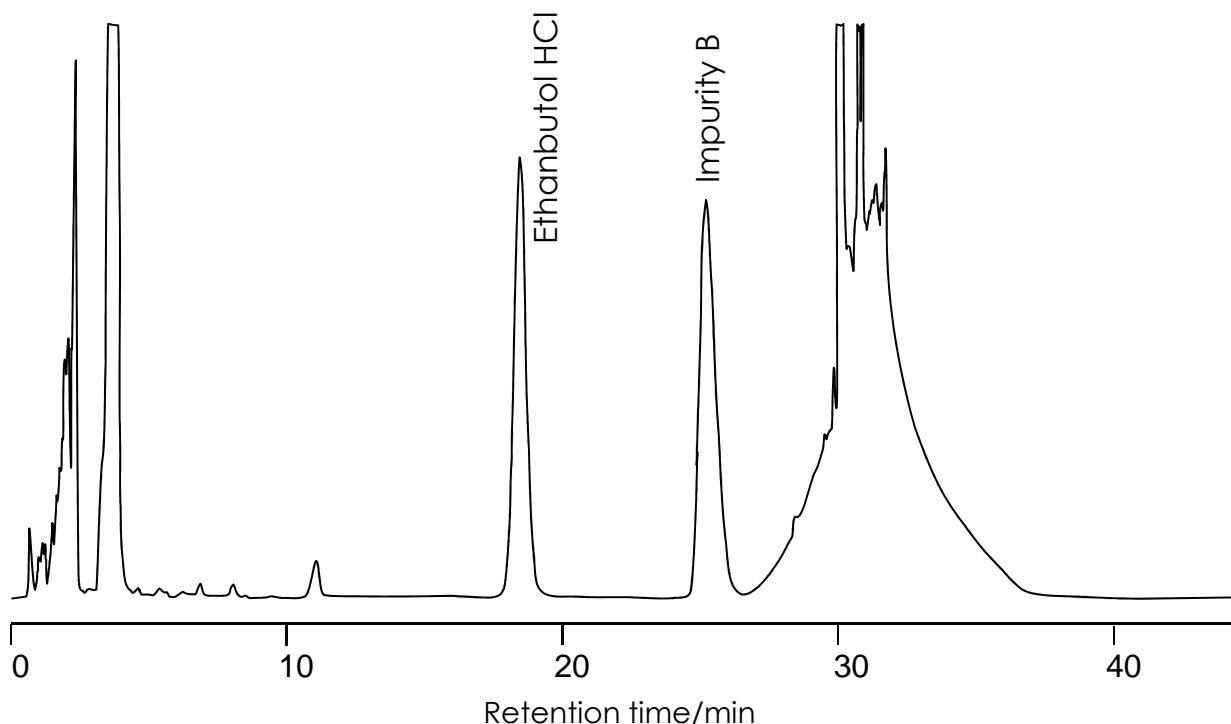
No. 1038A



エタンブトール

Ethambutol Hydrochloride

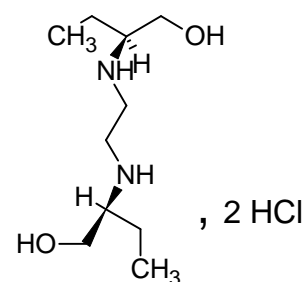
SunShell C18 2.6 μm, 100 x 4.6 mm i.d.



Column: SunShell C18 2.6 μm, 100 x 4.6 mm
 Mobile phase: A) methanol/water (50/50 V/V)
 B) methanol

Time(min)	0	30	35	37	38
%B	29	29	100	100	29

Flow rate: 1.0 mL/min
 Temperature: 40°C
 Detection: UV 215 nm
 Injection volume: 10 μL



Ethambutol Hydrochloride

System suitability

— resolution: minimum 4.0 between the peaks due to ethambutol and impurity B.

Limits:

— impurity B: not more than twice the area of the principal peak in the chromatogram obtained with reference solution (a)