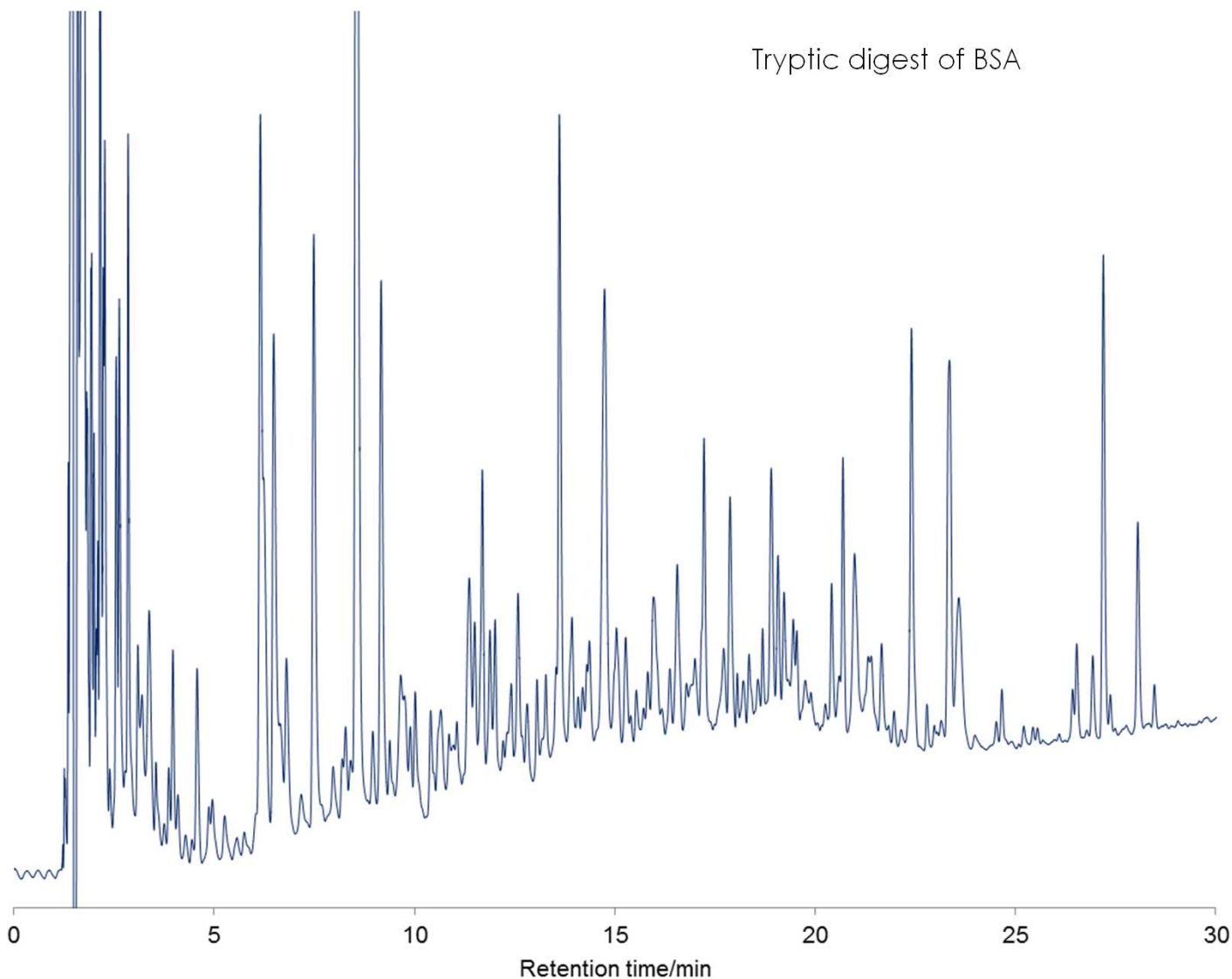


ペプチド(BSA)の分離

Peptides (BSA)

SunShell C18-WP 2.6 μm , 150 x 4.6 mm i.d.

Tryptic digest of BSA



Column: SunShell C18 -WP 2.6 μm , 150 x 4.6 mm

Mobile phase:

A) 0.1% TFA in $\text{H}_2\text{O}/\text{CH}_3\text{CN}=(90:10)$

B) 0.1% TFA in CH_3CN

Gradient program

Time	0 min	5 min	50 min
%B	5%	5%	50%

Flow rate: 1.0 mL/min,

Temperature: 25 °C

Detection: UV@215 nm

Sample: Tryptic digest of BSA